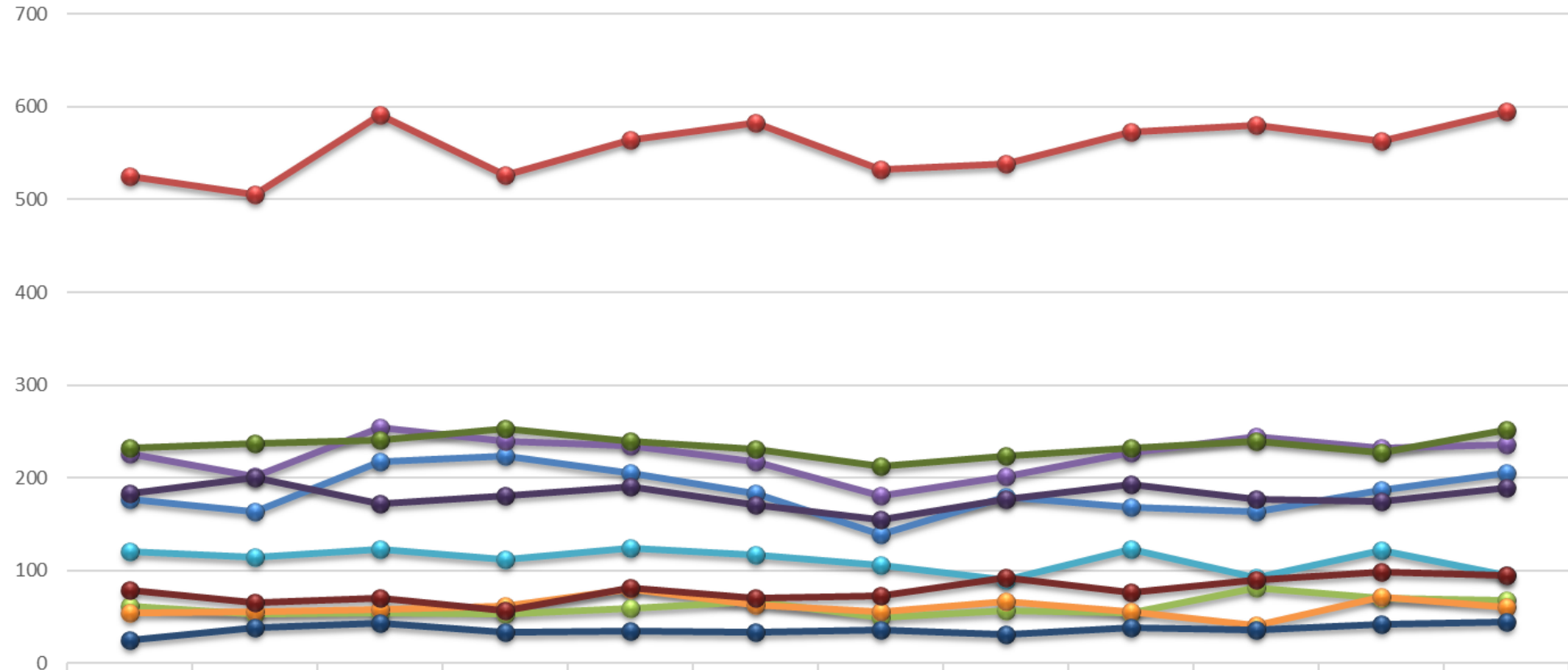
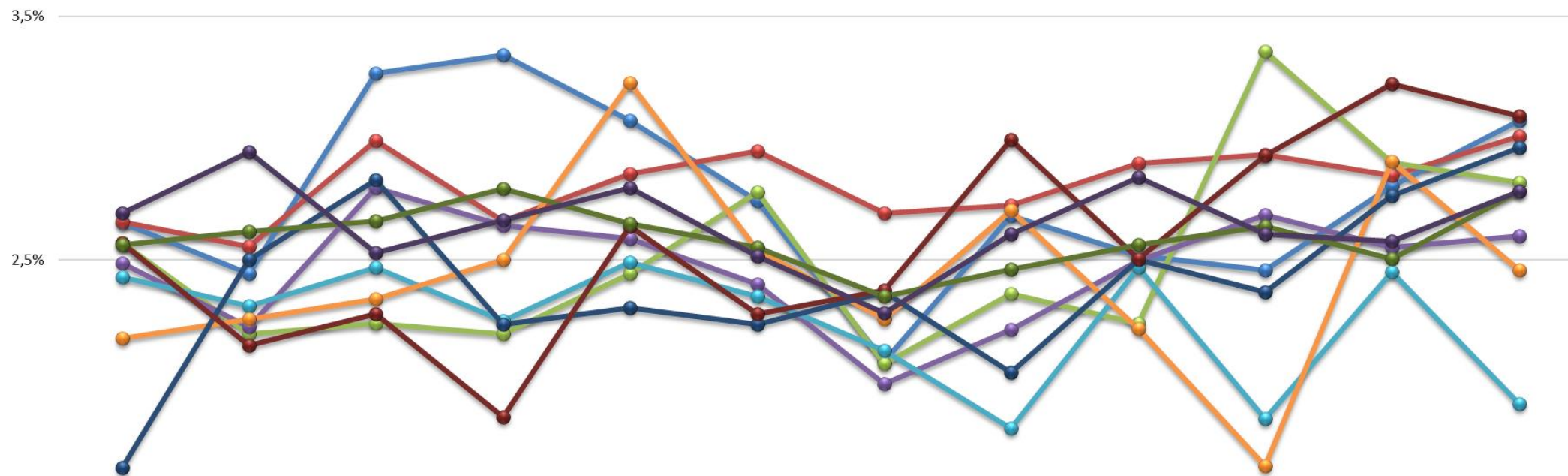


Antal inskrivna = vårdkontakter 65+ per kommun



	2022-01	2022-02	2022-03	2022-04	2022-05	2022-06	2022-07	2022-08	2022-09	2022-10	2022-11	2022-12
Bollnäs	177	163	218	223	205	183	139	179	168	164	187	205
Gävle	525	505	591	526	564	583	532	539	573	580	563	595
Hofors	62	53	54	53	59	67	50	57	54	81	70	68
Hudiksvall	226	202	254	240	235	218	181	201	227	244	232	236
Ljusdal	121	115	123	112	124	117	106	90	123	92	122	95
Nordanstig	54	56	58	62	80	63	56	67	55	41	72	61
Ockelbo	25	38	43	34	35	34	36	31	38	36	42	45
Ovanåker	79	66	70	57	81	70	73	92	77	90	99	95
Sandviken	232	237	241	253	240	231	213	223	232	239	227	252
Söderhamn	183	200	172	181	190	171	155	177	193	177	175	189

Andel inskrivna = vårdkontakter 65+ per kommun



1,5%

	2022-01	2022-02	2022-03	2022-04	2022-05	2022-06	2022-07	2022-08	2022-09	2022-10	2022-11	2022-12
● Bollnäs	3%	2%	3%	3%	3%	3%	2%	3%	3%	2%	3%	3%
● Gävle	3%	3%	3%	3%	3%	3%	3%	3%	3%	3%	3%	3%
● Hofors	3%	2%	2%	2%	2%	3%	2%	2%	2%	3%	3%	3%
● Hudiksvall	2%	2%	3%	3%	3%	2%	2%	2%	2%	3%	3%	3%
● Ljusdal	2%	2%	2%	2%	2%	2%	2%	2%	2%	2%	2%	2%
● Nordanstig	2%	2%	2%	2%	3%	3%	2%	3%	2%	2%	3%	2%
● Ockelbo	2%	2%	3%	2%	2%	2%	2%	2%	2%	2%	3%	3%
● Ovanåker	3%	2%	2%	2%	3%	2%	2%	3%	3%	3%	3%	3%
● Sandviken	3%	3%	3%	3%	3%	3%	2%	2%	3%	3%	3%	3%
● Söderhamn	3%	3%	3%	3%	3%	3%	2%	3%	3%	3%	3%	3%



Andelen inskrivna som är över 65 år per kommun helår

