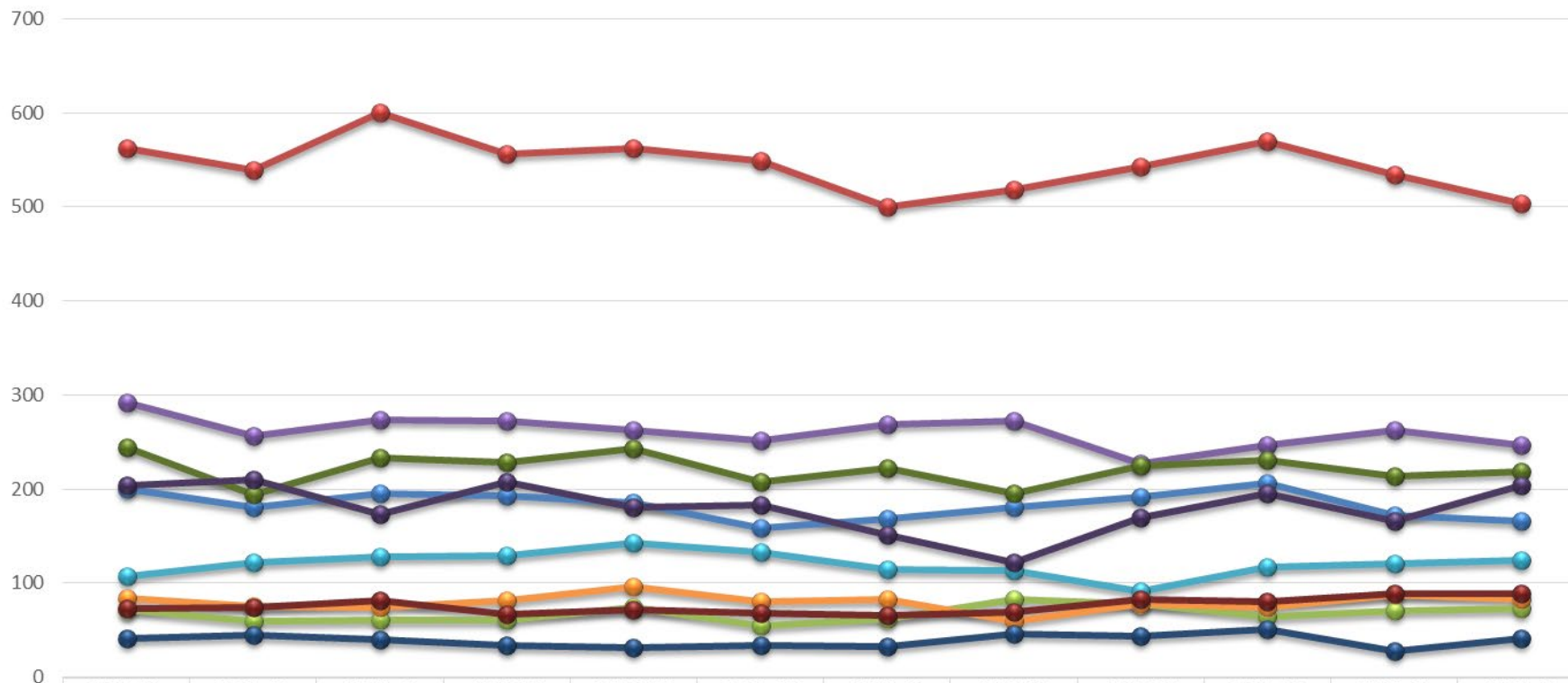
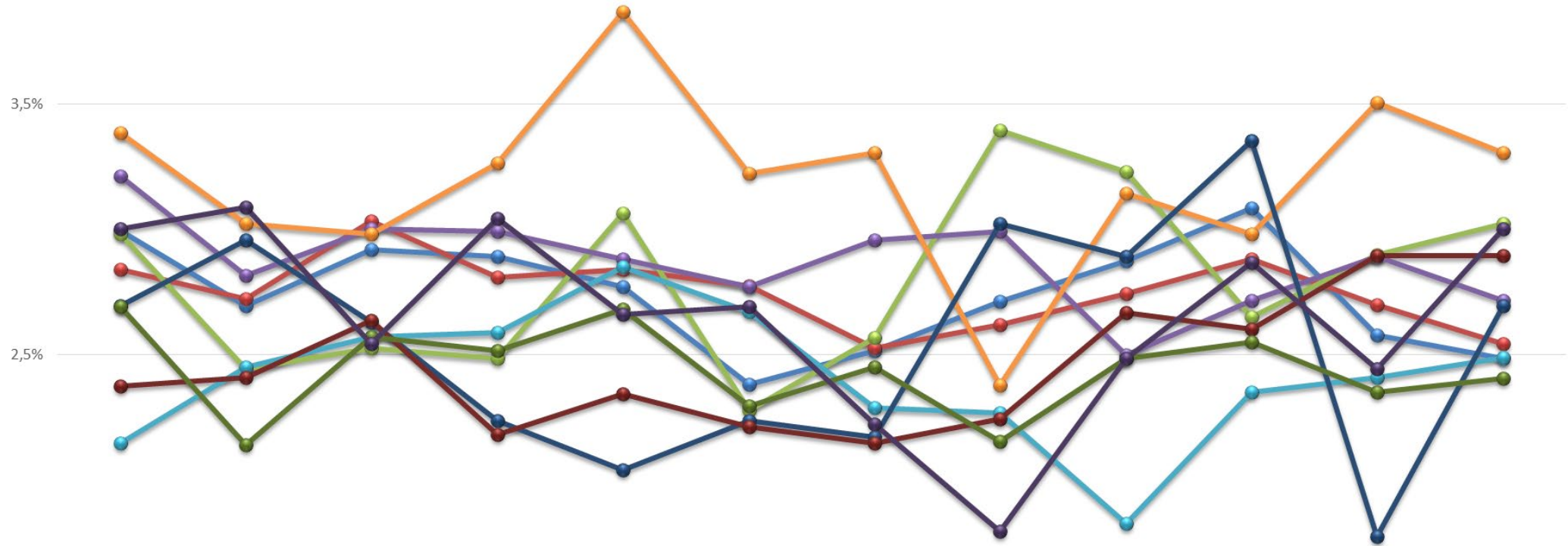


## Antal inskrivna = vårdkontakter 65+ per kommun



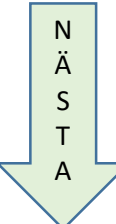
	2019-01	2019-02	2019-03	2019-04	2019-05	2019-06	2019-07	2019-08	2019-09	2019-10	2019-11	2019-12
Bollnäs	200	180	195	193	185	159	168	181	192	206	172	166
Gävle	562	539	600	556	562	549	500	518	543	570	534	503
Hofors	72	59	61	60	74	55	62	82	78	64	70	73
Hudiksvall	292	256	273	272	262	252	269	272	227	247	263	247
Ljusdal	107	122	128	129	142	133	114	113	91	117	120	124
Nordanstig	84	75	74	81	96	80	82	59	78	74	87	82
Ockelbo	41	45	40	34	31	34	33	46	44	51	27	41
Ovanåker	73	74	81	67	72	68	66	69	82	80	89	89
Sandviken	244	194	233	228	243	208	222	195	225	231	213	218
Söderhamn	204	210	173	207	181	183	151	122	169	195	166	204

### Andel inskrivna = vårdkontakter 65+ per kommun



1,5%

	2019-01	2019-02	2019-03	2019-04	2019-05	2019-06	2019-07	2019-08	2019-09	2019-10	2019-11	2019-12
Bollnäs	3%	3%	3%	3%	3%	2%	3%	3%	3%	3%	3%	2%
Gävle	3%	3%	3%	3%	3%	3%	3%	3%	3%	3%	3%	3%
Hofors	3%	2%	3%	2%	3%	2%	3%	3%	3%	3%	3%	3%
Hudiksvall	3%	3%	3%	3%	3%	3%	3%	3%	2%	3%	3%	3%
Ljusdal	2%	2%	3%	3%	3%	3%	2%	2%	2%	2%	2%	2%
Nordanstig	3%	3%	3%	3%	4%	3%	3%	2%	3%	3%	4%	3%
Ockelbo	3%	3%	3%	2%	2%	2%	2%	3%	3%	3%	2%	3%
Ovanåker	2%	2%	3%	2%	2%	2%	2%	2%	3%	3%	3%	3%
Sandviken	3%	2%	3%	3%	3%	2%	2%	2%	2%	3%	2%	2%
Söderhamn	3%	3%	3%	3%	3%	3%	2%	2%	2%	3%	2%	3%



## Andelen inskrivna som är över 65 år per kommun tom decemberr månad

